

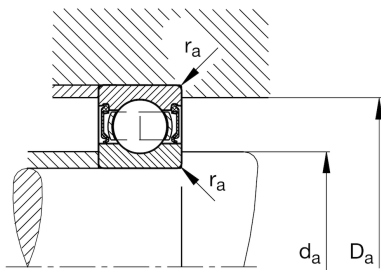
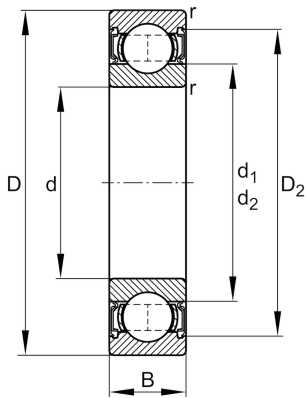
FAG

**62211-2RSR**

Deep groove ball bearing

Schaeffler ID:  
0167218610000Deep groove ball bearing 622..-2RSR,  
single row, seals, steel sheet metal cage

## Technical information

**Dimensions**

$r_{\min}$	1.5 mm	Minimum chamfer dimension
$D_2$	88.2 mm	Caliber diameter outer ring
$d_1$	68.7 mm	Shoulder diameter inner ring
	0.72 kg	Weight

**Main Dimensions & Performance Data**

d	55 mm	Bore diameter
D	100 mm	Outside diameter
B	25 mm	Width
$C_r$	44,500 N	Basic dynamic load rating, radial
$C_{0r}$	29,000 N	Basic static load rating, radial
$C_{ur}$	1,770 N	Fatigue load limit, radial
$n_G$	3,900 1/min	Limiting speed

**Mounting dimensions**

$d_{a \min}$	64 mm	Minimum diameter shaft shoulder
$D_{a \max}$	91 mm	Maximum diameter of housing shoulder
$r_{a \max}$	1.5 mm	Maximum fillet radius

**Calculation factors**

$f_0$	14.2	Calculation factor
-------	------	--------------------

**Temperature range**

$T_{\min}$	-20 °C	Operating temperature min.
$T_{\max}$	110 °C	Operating temperature max.